

The pneumatic pneu-Nimbus NanoLC Source

Dual-Column Benefits at Low-Cost

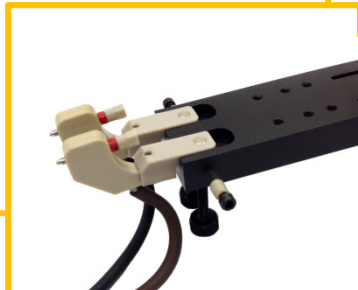


PST- pneu-Nimbus-Thermo: Compatible with Thermo MS. Also available as an upgrade for the AB Sciex® Nanospray I, II and III sources.

- New pneumatic-actuation of column switching utilizes the auxiliary gas output of the MS – no extra compressed air supply
- Magnetic Dual-column rail can be switched between on-axis spray and off-axis easily and without tools
- Extra fine Z-spray emitter position adjustment, a second camera and a third spray-head for calibration are optional
- Highly effective for biological sample matrix analyses, e.g. proteomics, metabolomics, biomarker discovery and method development

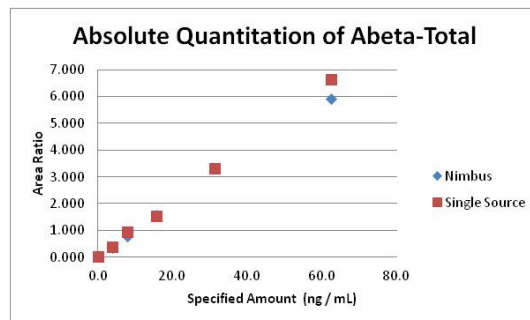


Magnetic column rail with cable-less HV connection enables columns of different lengths to be used in an analysis



Double your productivity Simply plug and spray - no new PC or software

- Substantially reduces carryover and improves data quality by washing the sample, column and emitter off-axis
- The high voltage for spraying is switched off for the off-axis column, eliminating any possibility for cross-talk
- On-board computer positions one column for analysis while performing off-axis loading, washing and equilibration on the second column
- Dual column automated system increases nano-LC throughput by up to 100%
- Proprietary Active Spray Control utilizes nitrogen to purge and clean the emitter



Calibration curve of total Amyloid beta from a serial dilution of a mixture of Abeta38, 40 and 42. Data was obtained with the Nimbus dual-column source and compared with a single column source (PST-MS Thermo) – same results in half the time.

We thank K. Mawuenyega, PhD, for the use of his data.

New!

- Removable magnetic column rail for easy column installation at the bench
- Spray-heads with sheath gas are magnetically engaged and removable

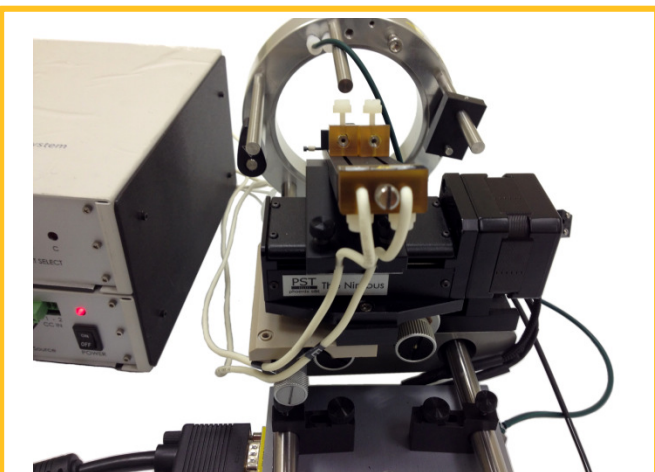
Ordering Information:

(610) 876.6081 info@phoenix-st.com www.phoenix-st.com

The Nimbus NanoLC Dual Column System

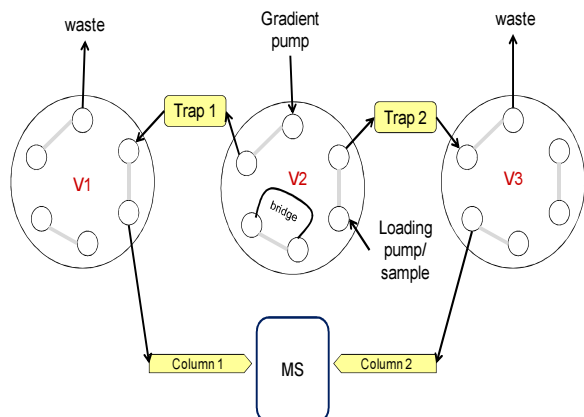
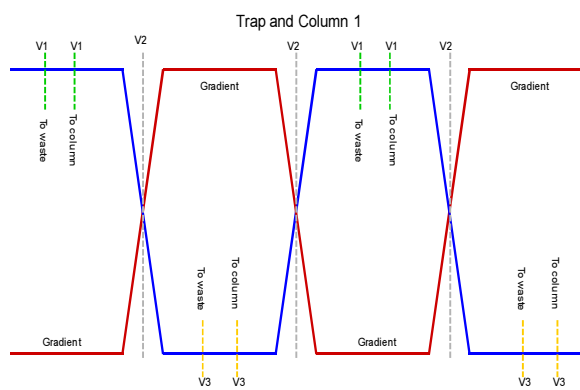
Available in motorized and pneumatic column-switching modes

Compatible with Thermo and AB Sciex® Mass Spectrometers

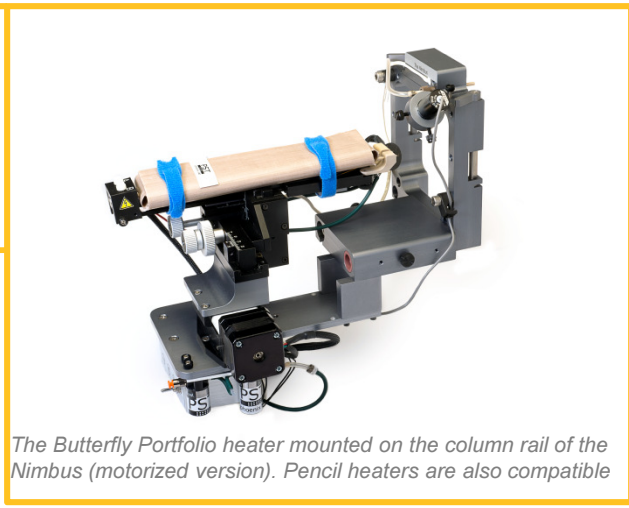


PST-Nimbus-AB : The Nimbus Upgrade (motorized version) for the AB Sciex® Nanospray sources and control electronics.

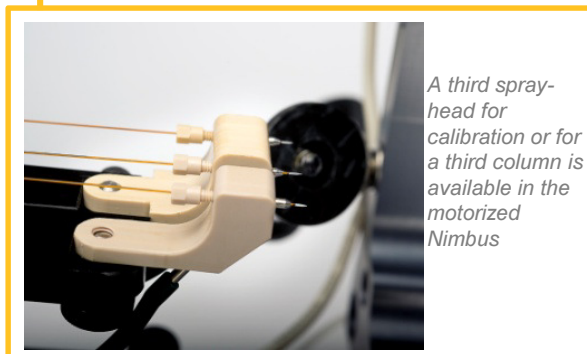
- Available as Upgrade to the AB Sciex® Nanospray I, II and III sources
- Easy to install: simply swap the column rail bracket
- Compatible with Phoenix S&T's column heaters
- Dual trap-analytical column analysis can be carried out with additional valves
- Compatible with a wide range of LC's
- Requires at least one gradient pump and one loading pump



Configuration and timing of the extra valves used in a dual-trap-analytical column analysis using the Nimbus



The Butterfly Portfolio heater mounted on the column rail of the Nimbus (motorized version). Pencil heaters are also compatible



A third spray-head for calibration or for a third column is available in the motorized Nimbus