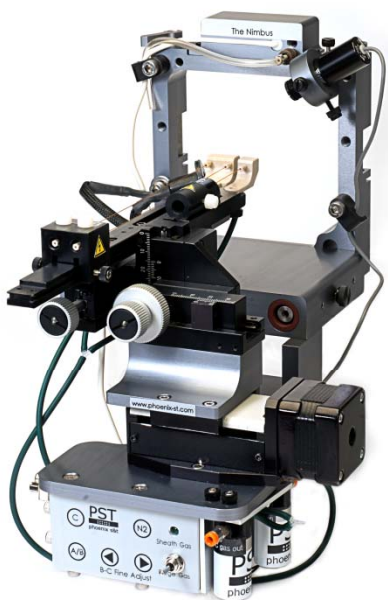


The Nimbus NanoLC Dual Column System

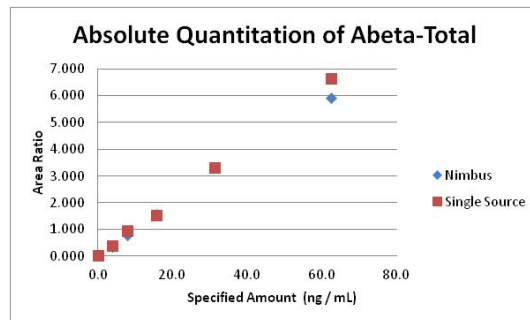


The Nimbus-Thermo: Compatible with Thermo MS

- Perform MS analysis faster, better and more economically without having to add a new computer or new software package
- Two modes of operation: alternating analysis between the two columns or triplicate runs on each column for clinical applications
- Highly effective for biological sample matrix analyses, e.g. proteomics, metabolomics, biomarker discovery and method development

Double your productivity Simply plug and spray - no new PC or software

- Substantially reduces carryover and improves data quality by washing the sample, column and emitter off-axis
- On-board computer positions one column for analysis while performing off-axis loading, washing and equilibration on the second column
- Dual column automated system increases nano-LC throughput by up to 100%
- Proprietary Active Spray Control utilizes nitrogen to purge the emitter



Calibration curve of total Amyloid beta from a serial dilution of a mixture of Abeta38, 40 and 42. Data was obtained with the Nimbus dual-column source and compared with a single column source (PST-MS Thermo) – same results in half the time. We thank K. Mawuenyega, PhD, for the use of his data.



No software package is needed. Simple push buttons control the fine adjustment of the column and emitter positions.



New!

- Third column position for calibration
- Upgrade AB Sciex Nanospray II® to the Nimbus system